



Emma Tiver Heritage Cottage C1856

Cottage 12 Tivers Row
12 Truro St Burra South Australia

- Listed on Register of State Heritage
- Winner of Mid North Tourism Award
- Winner National Trust/St George Bank Heritage Award

Bookings through
www.bnbbookings.com.au
Phone: 0414 686 700

HISTORY

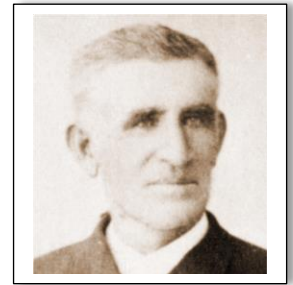
TIVERS ROW COTTAGES



The cottages were built by James & Emma Tiver, commencing with cottage 14 and, as time permitted, building the cottages on either side totaling 6 cottages in all.

James was born in Bristol England, June 11th 1829. He learnt his trade as a mason in England. He emigrated from Plymouth England to South Australia with his (first) wife Elizabeth, and young son James Hugh (2 years old) and Margaret Malcolm (born on the voyage). The ship 'David Malcolm' sailed with 342 emigrants landing in Port Adelaide in 1855.

The family travelled to Burra a few days after docking in Port Adelaide. James put up a wattle & daub 2 room hut near the ford for the family. Sadly, Elizabeth died in November 1856 of tuberculosis.



In February 1858, James married Emma (nee Price) on her 21st birthday. The Price family had moved from Chepstow in 1856 on the ship 'Alloquis'. Emma was the eldest of the 10 Price children.



James did contract work for the Copper Mines for the first two years in Burra. In 1856 the first cottage was built. Most of the Tiver children were born at this cottage.

James was responsible for many buildings in Burra:

- Redruth Methodist Church
- The Town Hall
- Burra Railway Station & Station master's residence
- Bridge at Burra North
- The original store at 1 Young St – Tiver & Sons

Emma and step son James Hugh ran the store Tiver & Sons (1 Young St) allowing James to continue with contractual work.



James employed up to 100 men in the building trade.

James purchased and sold pastoral leases. Ultimately, this led to the establishment of Tiverton Station.



James was a member of the Kooringa Corporation, a Justice of the Peace, superintendent of the Methodist Church Sunday School, an office bearer of the church, a member of the Masonic Lodge. James was also connected with the Order of Oddfellows for many years.

James and his eldest son, it is said, both “took too much to the drink”, although James later gave it up altogether. There is a story that Emma, eventually frustrated with the behaviour, went to the hotel with James and ordered drink for drink with him. Her own drinks she emptied into the gutter outside.



James was impressed by the waste and ultimately gave it up.

James died in March 1909. (80 years of age)

Emma died in July 1926.(89 years of age)

VISION and the RENOVATIONS



The cottages were meticulously restored by Maureen and Barry Wright. The owners of the Antique store Sarah's which was housed in the old Tiver & Sons site in Young St Burra.

The Wrights purchased the property in 1986 with the vision to renovate and open the cottages as a bed and breakfast facility, ultimately offering a strata title so the cottages could be sold or rented separately. Commencing the project in 1992, the last two cottages were completed and opened for occupancy at Easter 1999.

Each cottage sleeps two couples, offering two bedrooms with double and queen beds, a self-contained kitchen, comfortable lounge and a fully renovated bathroom.

The décor has been carefully selected to reflect the colours used in the mining era of the mid 1800's, the furnishings and accessories used in the cottage refurbishment have been methodically chosen to reflect the actual period within Burra history.

The shingle roof has been maintained, and protected by the new galvanized iron cladding. The original stove in the kitchen, while no longer usable, is the stove used by the families. The fireplace in the cottage lounge room, has been the same for over a century.

The rear garden has been rejuvenated with traditional cottage garden plants, to reflect the garden of the period. The smell of rosemary and mint, with the hint of lavender, provide an insight into the aromas of the time.



Prior to the Renovations



EMMA TIVER HERITAGE COTTAGE

As bed and breakfast, the cottage now offers a full breakfast for guests. The breakfast provisions, include country style bacon, free range eggs, along with cereals, locally made jams, biscuits, fresh orange juice, bread and milk of your choice, plunger coffee and Twining's teas. The cottage also offers a pancake maker for the adventurous at breakfast.

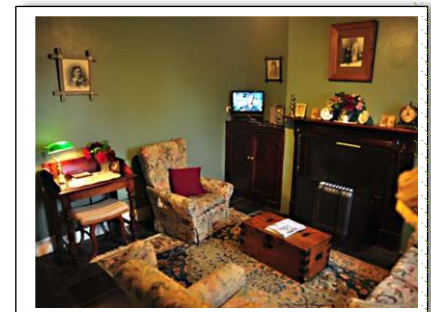


The cottage also provides a gas powered BBQ for evening meals, which can be taken in the private cottage garden under the old almond trees. There is a writing desk for those wishing to complete their paperwork without disruption to the kitchen table.

The hand-made quilts have been added to reflect the era of the furnishings, as have the small items (like the tins for tea, and the teapot & tea-cosy) in the kitchen, and the shelving and books in the lounge, the lamps in the bedrooms are far more modern, while giving the insight into the period of the cottage.



The open fire heats the cottage efficiently. All wood is supplied and a basket on the back verandah is replenished each day. The cottage has a recycle air conditioner to ensure your comfort. The cottage has its own TV and DVD player, stereo and some peaceful and modern music, washing machine & dryer.



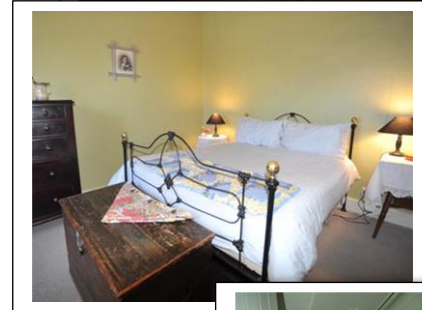
There are books, games, cards, DVDs CDs and magazines for your relaxation.



Bedrooms offer a double bed & queen bed, with all linen supplied. Each room has drawers and clothes hanging facilities, and toweling robes are supplied.



Bathroom supplies include towels, shampoo, soap and a hairdryer.



The rear cottage garden offers fresh flowers, a comfortable verandah with table and chairs, and an outdoor table and seating under the almond tree.



A carport at the rear of the garden allows you to securely park your vehicle on the property.



Bookings through www.bnbbookings.com.au

- Cottages each accommodate four people comfortably
- Advanced booking recommended.

Emma Tiver Heritage Cottage (Tivers Row Owners/Operators)
Alan & Catherine Logue

BURRA TOWN MAP

Emma Tiver Heritage Cottage ★

